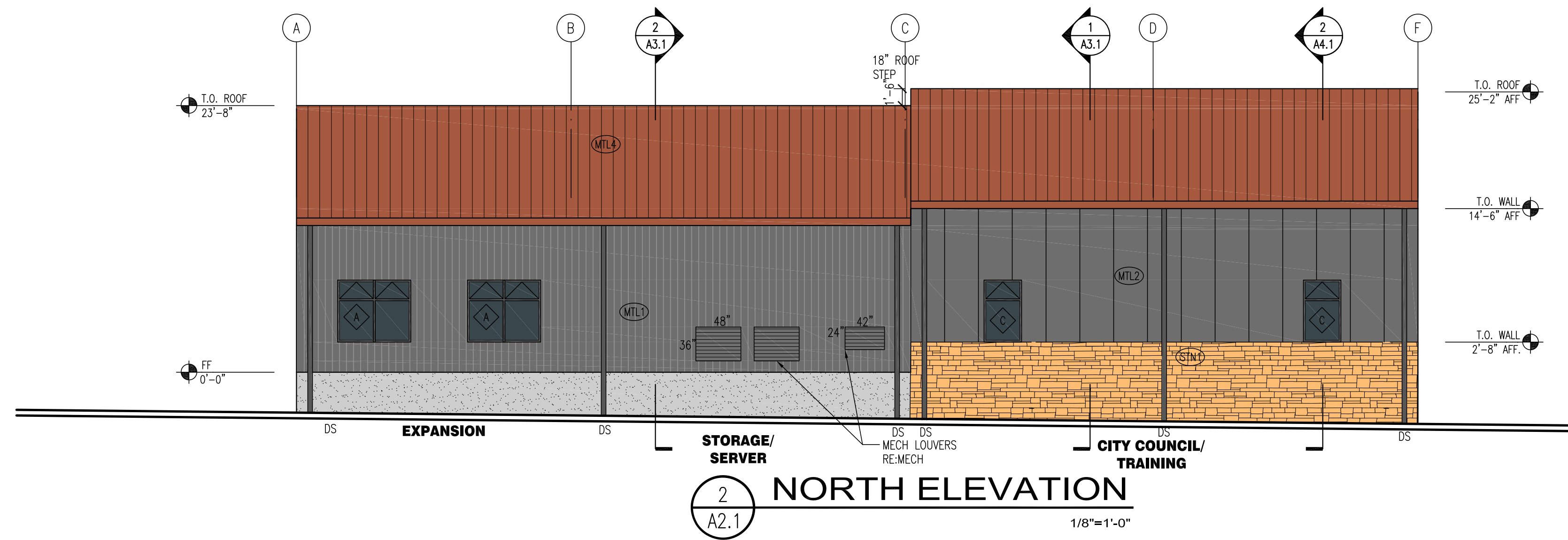
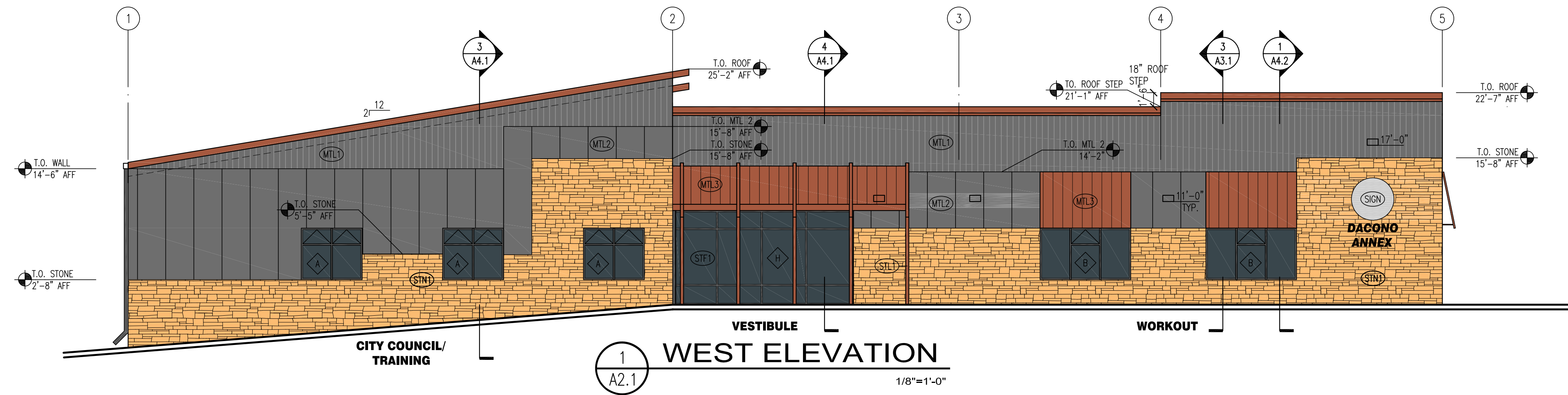



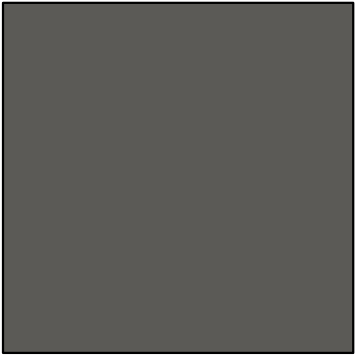
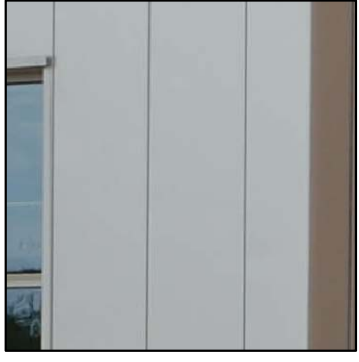
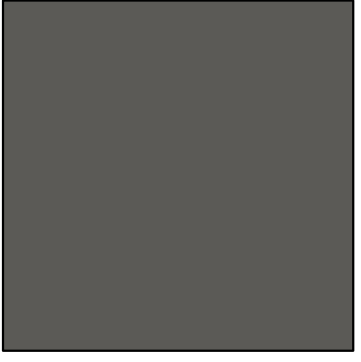

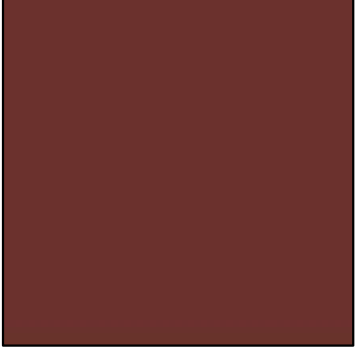

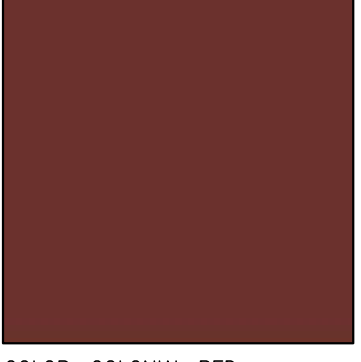
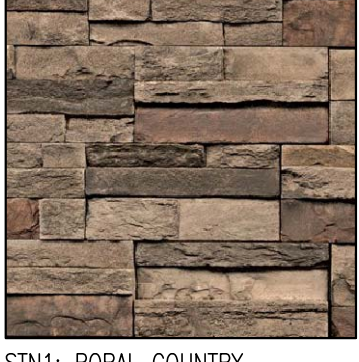
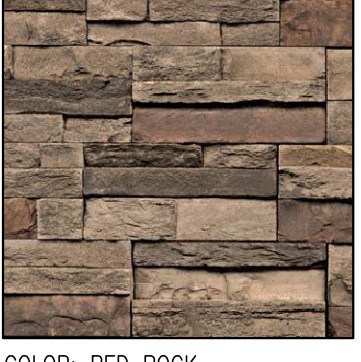


SITE PLAN
FOR
DACONO CITY COMPLEX NEW ANNEX BUILDING
BLOCK 15, TOWN OF DACONO
COUNTY OF WELD, STATE OF COLORADO
SHEET 9 OF 11

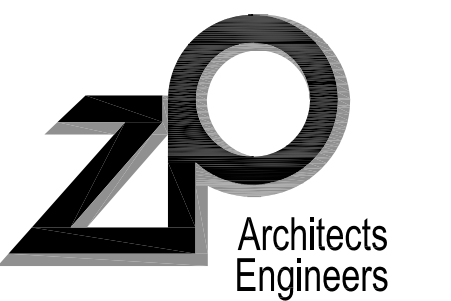


MATERIAL SCHEDULE:

- (MTL1) CORRUGATED METAL WALL PANEL:
MBCI CORRUGATED 7.2 WALL PANEL FOR MAIN WALL PANELS. RUN VERT.
36" WIDE x 12" EXPOSED FASTENER. COLOR: CHARCOAL GREY
- (MTL2) FLAT INSUL METAL ACCENT WALL PANEL:
MBCI ARCHITECTURAL VERTICAL PANEL 36"x3". COLOR: CHARCOAL GREY
- (MTL3) CORRUGATED CANOPY:
MBCI CORRUGATED METAL PANEL. PBC 32"x3" PANEL W/EXPOSED STL
TUBE FRAME. COLOR: COLONIAL RED
- (MTL4) STANDING SEAM ROOF PANEL:
MBCI STANDING SEAM MTL ROOF, BATTEN LOCK HS 12"x2". COLOR:
COLONIAL RED
- (STL1) STEEL COLUMN:
STRUCTURAL STEEL COLUMN. COLOR: COLONIAL RED
- (STN1) SYNTHETIC CULTURED STONE VENEER:
CULTURE STONE VENEER, BORAL COUNTRY LEDGESTONE OR EQ.
COLOR: RED ROCK
- (STF1) ALUMINUM STOREFRONT WINDOW:
INSULATED ALUM STOREFRONT WINDOW, KAWNEER 451T OR EQ. DARK
BRONZE ANODIZED W/LOW E GRAY TINT INSULATED GLASS UNIT
- (SIGN) CITY SEAL SIGN PLAQUE
BY OWNER.

MATERIAL BOARD:

MATERIAL	COLOR
	
MTL1: MBCI CORRUGATED 24 GA 7.2 PANEL	COLOR: CHARCOAL GREY
	
MTL2: MBCI 36" INSUL ARCHITECTURAL PANEL	COLOR: CHARCOAL GREY
	
MTL3: MBCI PBC PANEL	COLOR: COLONIAL RED
	
MTL4: MBCI BATTENLOK HS PANEL	COLOR: COLONIAL RED
	
STN1: BORAL COUNTRY LEDGESTONE	COLOR: RED ROCK
	
STF1: KAWNEER 451T	COLOR: DARK BRONZE ANODIZED



2727 Bryant Street
Suite 610
Denver, CO 80211
303.455.3322 T
www.zparcheng.com

DACONO CITY COMPLEX
NEW ANNEX BUILDING
SITE PLAN

DACONO, CO

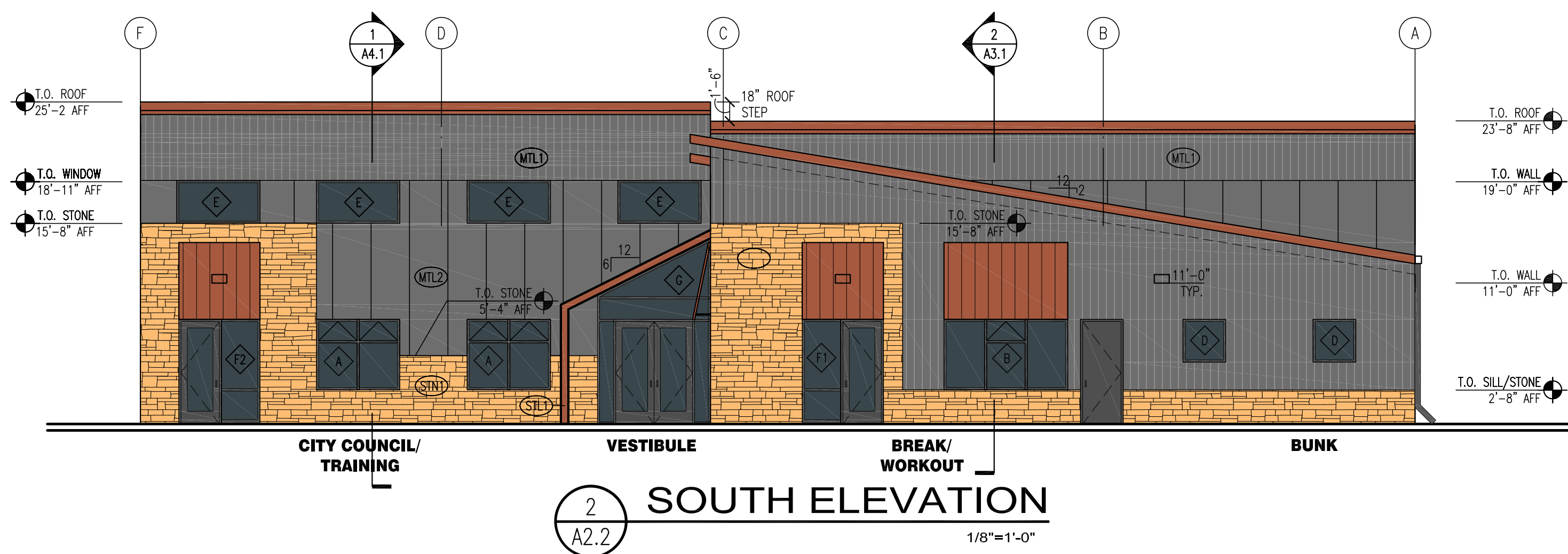
512 CHERRY ST

ISSUE:
SUBMITTAL 1 9-9-20

JOB NUMBER:
Z19-059
SHEET TITLE:
BUILDING ELEVATIONS

A2.1


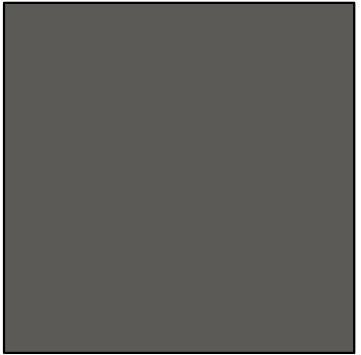

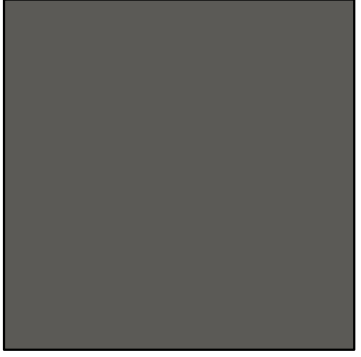
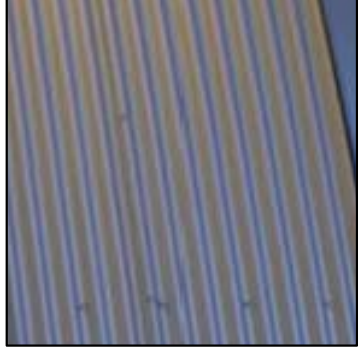
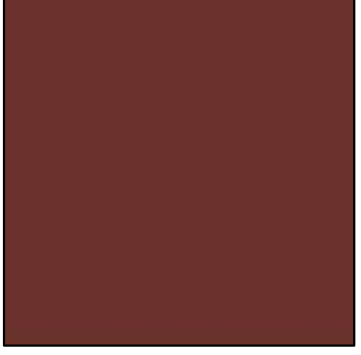

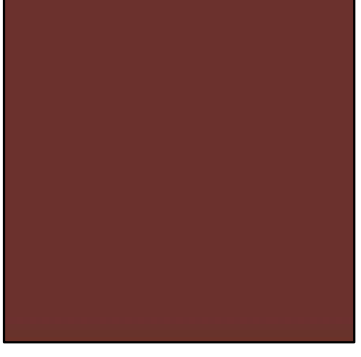




SITE PLAN
FOR
DACONO CITY COMPLEX NEW ANNEX BUILDING
BLOCK 15, TOWN OF DACONO
COUNTY OF WELD, STATE OF COLORADO
SHEET 10 OF 11

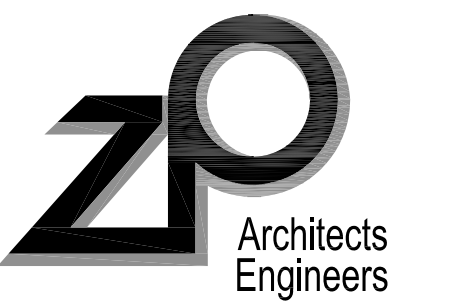


MATERIAL SCHEDULE:

- (MTL1) CORRUGATED METAL WALL PANEL:
MBCI CORRUGATED 7.2 WALL PANEL FOR MAIN WALL PANELS. RUN VERT.
36" WIDE x 12", EXPOSED FASTENER. COLOR: CHARCOAL GREY
- (MTL2) FLAT INSUL METAL ACCENT WALL PANEL:
MBCI ARCHITECTURAL VERTICAL PANEL 36"x3". COLOR: CHARCOAL GREY
- (MTL3) CORRUGATED CANOPY:
MBCI CORRUGATED METAL PANEL. PBC 32"x24" PANEL W/EXPOSED STL
TUBE FRAME. COLOR: COLONIAL RED
- (MTL4) STANDING SEAM ROOF PANEL:
MBCI STANDING SEAM MTL ROOF, BATTEN LOCK HS 12"x2". COLOR:
COLONIAL RED
- (STL1) STEEL COLUMN:
STRUCTURAL STEEL COLUMN. COLOR: COLONIAL RED
- (STN1) SYNTHETIC CULTURED STONE VENEER:
CULTURE STONE VENEER, BORAL COUNTRY LEDGESTONE OR EQ.
COLOR: RED ROCK
- (STF1) ALUMINUM STOREFRONT WINDOW:
INSULATED ALUM STOREFRONT WINDOW, KAWNEER 451T OR EQ. DARK
BRONZE ANODIZED W/LOW E GRAY TINT INSULATED GLASS UNIT
- (SIGN) CITY SEAL SIGN PLAQUE
BY OWNER.

MATERIAL BOARD:

MATERIAL	COLOR
 MTL1: MBCI CORRUGATED 24 GA 7.2 PANEL	 COLOR: CHARCOAL GREY
 MTL2: MBCI 36" INSUL ARCHITECTURAL PANEL	 COLOR: CHARCOAL GREY
 MTL3: MBCI PBC PANEL	 COLOR: COLONIAL RED
 MTL4: MBCI BATTENLOK HS PANEL	 COLOR: COLONIAL RED
 STN1: BORAL COUNTRY LEDGESTONE	 COLOR: RED ROCK
 STF1: KAWNEER 451T	 COLOR: DARK BRONZE ANODIZED



2727 Bryant Street
Suite 610
Denver, CO 80211
303.455.3322 T
www.zparcheng.com

DACONO CITY COMPLEX
NEW ANNEX BUILDING
SITE PLAN

DACONO, CO

512 CHERRY ST

ISSUE:
SUBMITTAL 1 9-9-20

JOB NUMBER:
Z19-059
SHEET TITLE:
BUILDING ELEVATIONS

A2.2

SITE PLAN
FOR
DACONO CITY COMPLEX NEW ANNEX BUILDING
BLOCK 15, TOWN OF DACONO
COUNTY OF WELD, STATE OF COLORADO
SHEET 11 OF 11



3 PERSPECTIVE
A2.3



1 PERSPECTIVE
A2.3



4 PERSPECTIVE
A2.3



2 PERSPECTIVE
A2.3

DACONO, CO

DACONO CITY COMPLEX
NEW ANNEX BUILDING
SITE PLAN

512 CHERRY ST

ISSUE:
SUBMITTAL 1 9-9-20

JOB NUMBER:
Z19-059
SHEET TITLE:
PERSPECTIVES

A2.3